



KONICA MINOLTA

Office system bizhub 750



bizhub 750

Black-and-white at the Speed of Light

The essentials of imaging



Deadlines have to be met:

Be prepared

➔ **Speed isn't everything,
but it makes a difference**

Big job, tight deadline. Almost impossible.
But who wants to say no?

You won't have to any more. The new bizhub 750 won't let you down. High-speed and high-quality professional prints and copies as well as a wide range of sophisticated finishing capabilities make it an ideal addition to your production facilities.

Do you regularly produce high volume jobs calling for top rate black-and-white copies or prints on a tight deadline? It's worth looking into all the many features that the bizhub 750 offers.

Speed is of the essence.

bizhub 750





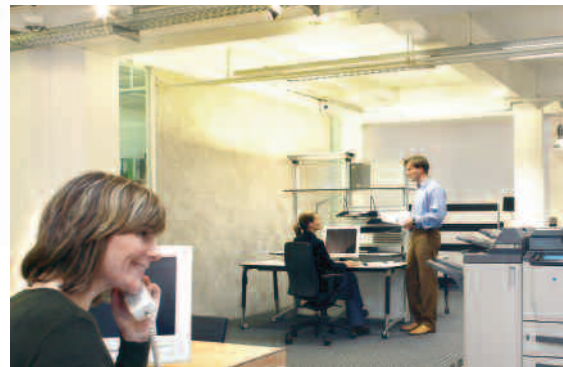
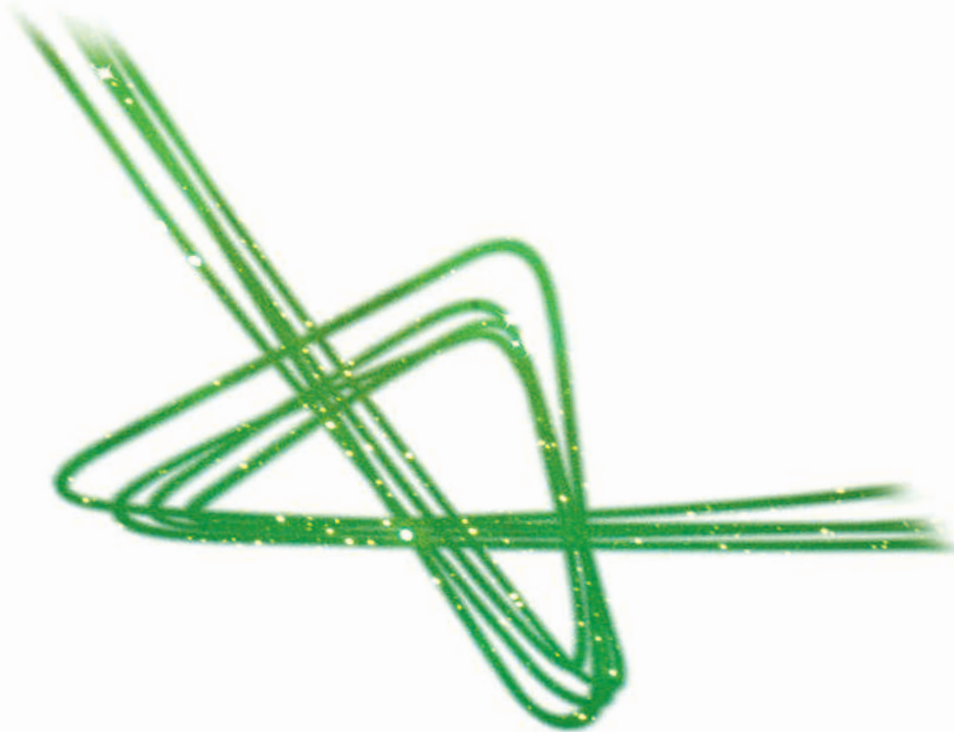
➔ Quality doesn't have to be slow

We designed the multifunctional bizhub 750 with the needs of today's professional document production facilities in mind.

Thanks to Konica Minolta's Emperon™ print technology, you don't have to cut back on quality even when volume and speed are of prime importance. You can rely on the results: Brilliant high-resolution black-and-white copies and prints, professional output. And you do not have to sacrifice on ease, reliability and affordability either!

Automatic operations increase productivity and save time. Online status feedback means that you know at your desk when paper or toner refills are necessary.

But the bizhub 750 is not only a network copier and printer. It is also a scanner and fax* machine that provides the communication and networking capabilities required by high-volume production facilities.



*from beginning 2006

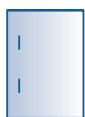
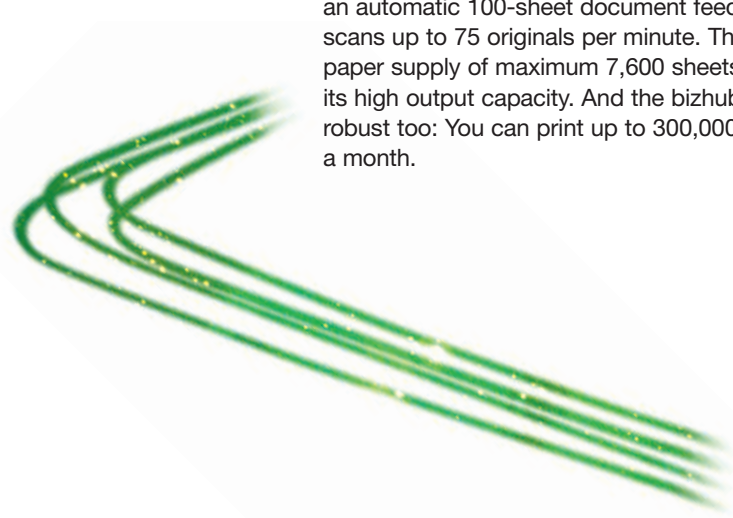




➔ **Features that mean business**

- **Speed:**
Swiftness is the name of the game in today's world. Big print runs require fast processing. The bizhub 750 prints and copies up to 75 A4 pages and up to 43 A3 pages per minute. Paper and toner can be refilled on the fly allowing for a smooth and continuous workflow.
- **High volume:**
If you require large black-and-white print runs, then the bizhub 750 is an ideal solution. It has an automatic 100-sheet document feeder that scans up to 75 originals per minute. The large paper supply of maximum 7,600 sheets suits its high output capacity. And the bizhub 750 is robust too: You can print up to 300,000 pages a month.

- **High quality results:**
Thanks to Simitri™, Konica Minolta's innovative extra fine polymerised toner, you get the best black-and-white copies and prints possible. Halftone definition and solid fills are better than ever.
- **Nothing gets lost:**
The large memory capacity of the bizhub 750 can simultaneously manage multiple jobs. And the optional hard disk turns the bizhub 750 into an effective document server and archiving system.
- **From business cards to booklets:**
Because the bizhub 750 can process paper ranging from A6 to A3+ in size and from 50 g/m² to 200 g/m² in weight, you can produce countless types of business-oriented printed matter. And all that at up to 100% productivity.



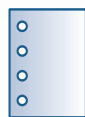
stapling



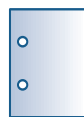
colour sheet insertion, booklet



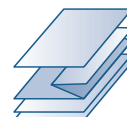
booklet with cover



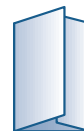
four-hole punching



two-hole punching



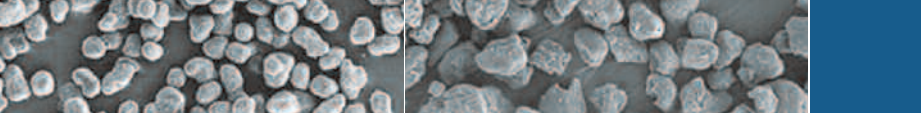
z-fold



tri-fold



booklet maker



Simitri™-polymerised toner

Conventional toner



■ **Print it and finish it:**
Automatic online finishing gets the job done. The bizhub 750 offers up to 100-sheet stapling capacity. Options include offsetting, stapling, punching and three different folding functions. Pre-printed front and back cover material can be easily inserted. Whether you need forms, leaflets or booklets, the bizhub 750 gives you a decisive advantage.





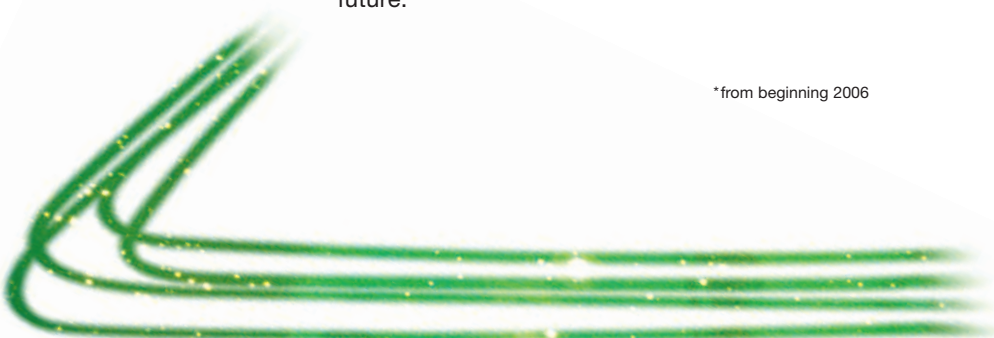
All you need for a fast future

➔ Speed gives you the edge

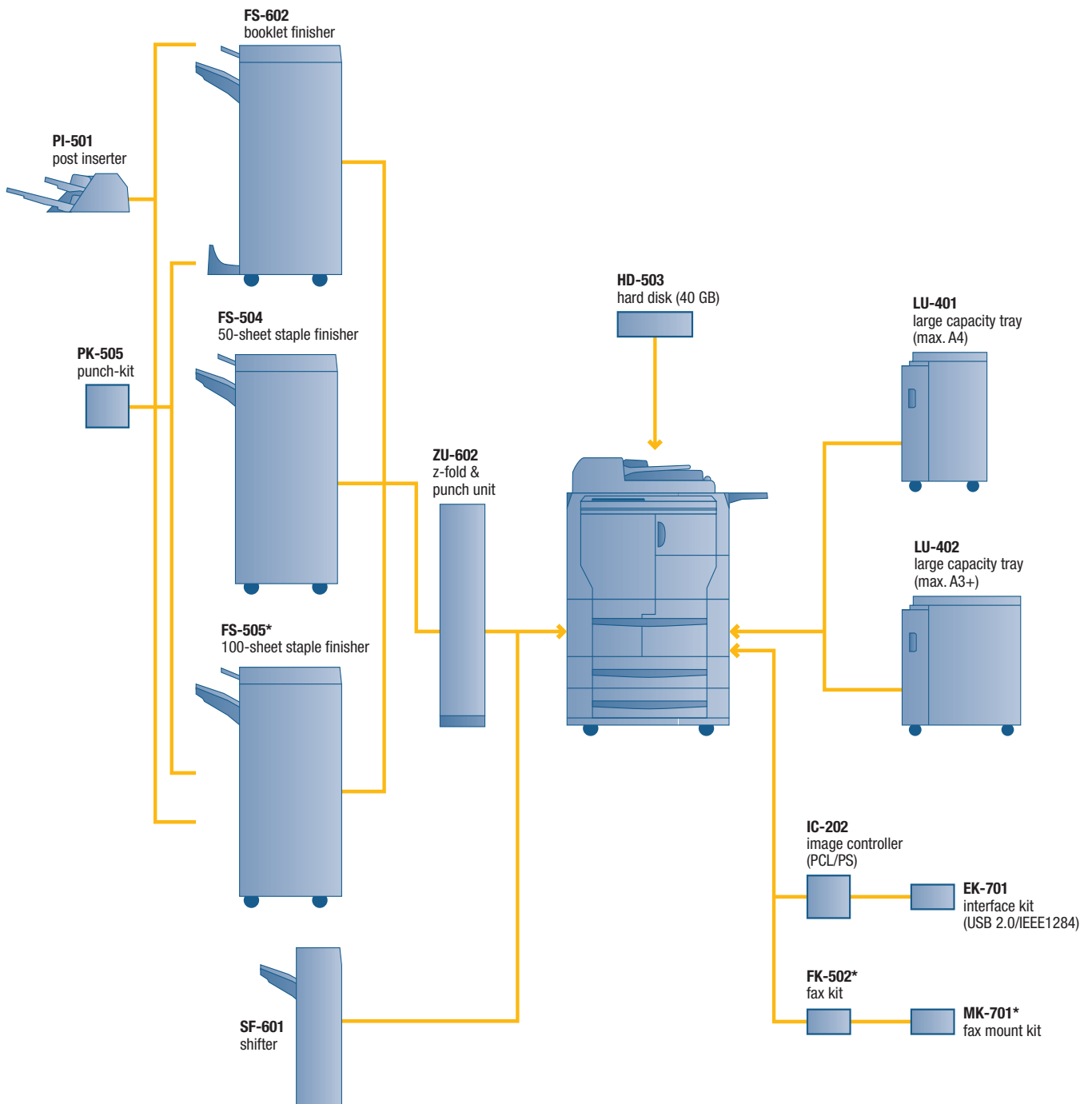
User-friendly, cost-effective, and fast. The bizhub 750 combines many features you and your production facilities need. Office environments no longer require separate printers, copiers, fax* machines or scanning devices. It's all here in one compact unit, allowing for a greater utilisation of your network resources.

The bizhub 750 is an ideal high-performance document production system. With its proven reliability and remote maintenance possibilities that ensure high up-times and reduced service intervention, it could mean the start of a fast future.

*from beginning 2006



Your options at a glance



* from beginning 2006



KONICA MINOLTA

Simitri



CITRIX



Technical specifications

Copier specifications

Copying process

Electrostatic laser copy

Toner system

Polymerised toner

Copy/print speed A4

75 cpm/ppm

Copy/print speed A3

43 cpm/ppm

1st Copy/print time

2.9 sec. (A4)

Warm-up time

Approx. 300 sec.

Copy resolution

1,200 x 600 dpi (interpolated)

Gradation

Equivalent to 256 gradations

Multicopy

1-9,999, countdown, interruption mode

Original format

A5-A3

Magnification

25-400% in 0.1% steps

Copier memory

512 MB std./max.

Copier hard disk (optional)

40 GB

Copy features

Chapter/image insertion, booklet creation, combination N-in-1, image rotation, stamp/watermark, job reserve

Printer specifications (optional)

Print resolution

Max.: 2,400 x 600 dpi (interpolated)

Controller CPU

Intel Celeron 650 MHz

Page description language

PCL 5e/6

PostScript 3

Operating systems

Windows 98/ME/NT4.0/2000/XP/2003 Server
Macintosh 9.x/10.x

Interface

10-Base-T/100-Base-TX Ethernet (standard),
USB 2.0 (optional),
IEEE 1284 (optional)

Printer memory

512 MB (shared with copier)

Printer hard disk (optional)

40 GB (shared with copier)

Scanner specifications

Scan speed

Up to 75 opm (A4)

Scan resolution

Max.: 600 x 600 dpi

Scan modes

TWAIN scan*
Scan-to-eMail
Scan-to-FTP
Scan-to-SMB
Scan-to-Box/HDD*
(* with optional hard disk)

File Formats

TIFF, PDF

Scan destinations

LDAP support

Fax specifications (optional)*

Fax standard

Super G3

Fax resolution

Max.: 600 x 600 dpi (ultra-fine)

Fax compression

MH, MR, MMR, JBIG

Fax modem

Up to 33.6 Kbps

Fax memory

512 MB (shared with copier)

Fax functions

Polling, memory transmission,
broadcasting, PC fax

System specifications

Automatic document feeder (standard)

Up to 100 originals

Paper size

A6-A3 full bleed

Paper weight

60-200 g/m² (from all paper trays)
50-200 g/m² (from bypass)

Paper input capacity

Standard: 3,600 sheets
Max.: 7,600 sheets

Output capacity

Up to 3,200 sheets

Automatic duplexing (standard)

A5-A3 full bleed
60-200 g/m²

Finishing modes (optional)

Offset, group, sort, staple,
punch (2/4 holes),
z-/centre-/3-fold, booklet

Copy/print volume (monthly)

Recommended: 60,000-90,000
Max.: 300,000

Power consumption

2,000 Watt (system)

System dimension (WxDxH mm)

650 x 791 x 1,140 (incl. feeder)

System weight

Approx. 222 kg (incl. feeder)

System features

Accounting

1,000 user accounts
Active directory support
(user name + password)
User function access definition

Software

PageScope NetCare
PageScope NetSetup
PageScope Data Administrator
PageScope Workware

* from beginning 2006

All specifications relating to paper capacity refer to A4-sized paper of 80 g/m² quality.

All specifications relating to scanning, copying or printing speeds refer to A4-sized paper that is scanned, copied or printed crosswise in multipage, simplex mode.

The memory capacities listed refer to A4-sized paper with the toner coverage detailed in the respective foot note.

Some of the product illustrations contain optional accessories.

Konica Minolta does not warrant that any prices or specifications mentioned will be error-free.

Specifications are subject to change without notice.

Microsoft, Windows, and the Windows logo are trademarks, or registered trademarks of Microsoft Corporation in the United States and/or other countries.

All other brand and product names may be registered trademarks or trademarks of their respective holders and are hereby acknowledged.

Printed in Germany on chlorine-free bleached paper.

Your Konica Minolta Business Solutions Partner:



Konica Minolta
Business Solutions Europe GmbH
Europaallee 17
30855 Langenhagen • Germany
Tel.: +49 (0) 511 74 04-0
Fax: +49 (0) 511 74 10 50