



KONICA MINOLTA

# EASY AND AFFORDABLE COLOUR PRODUCTION

Internal Konica Minolta Controller



CONTROLLER  
**IC-602**

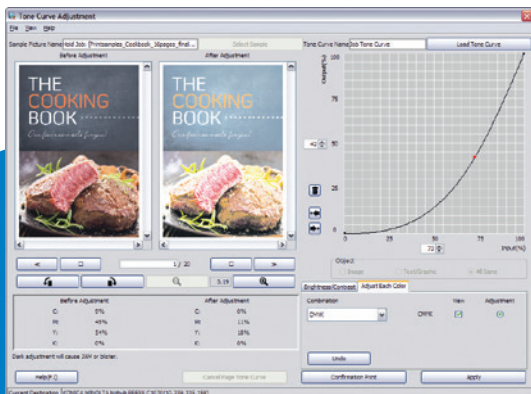


# ALL IN ONE – ENJOY HIGH QUALITY, PERFORMANCE AND EASE OF USE

The embedded Konica Minolta controller IC-602 combines high-quality and excellent performance with attractive low cost, promising seamless integration with all digital colour presses. An essential highlight of the IC-602 is its full support of important Konica Minolta applications, such as the PageScope and Printgroove series of comprehensive software utilities. The IC-602 enables companies to configure a professional end-to-end colour production solution that incorporates hardware, controller and software, all from one source – Konica Minolta!

## ▀ Highest quality for your customers

The IC-602 controller features Color Centro, Konica Minolta's standard colour management tool, which supports the varied demands of both high-end and entry-level users. In addition to general features like calibration, profile management and tone curve adjustment, Color Centro provides colour configuration management as a convenient function. This new concept combines all available colour settings, facilitating adjustments for the operator who can easily produce sample prints and choose the best print result for production. Before printing a new job, the operator can complete the assignment of the required colour profile simply by selecting the appropriate colour configuration.



## ▀ Increase your throughput

The IC-602 embedded controller offers ultra-fast, high-performance printing, based on its optimised design for both controller and print engine. With the controller and the printing press coming from the same source: Konica Minolta. RIP files are stored in the engine's HDD, which is an advantage when processing multiple copies. All the different synergy effects provide an attractive increase in throughput, enabling printers to manage more jobs and achieve greater revenue potential.

## ▀ Flexibility in colour management

The IC-602 gives users the choice of performing job management with Job Centro or managing settings individually via the operation panel of the output system. With this, users benefit from enhanced flexibility as well as easier colour control management. Via Color Centro, colour profiles can be configured and managed quickly and easily. Both operation alternatives greatly contribute to increasing the overall efficiency of users, facilitating job management and the editing of job tickets as well as pages within each job. The option of displaying the scheduler and tray information for each print job, together with the job time and sheet volume, reduces manual operation steps and frees operator time for more important tasks.

## Simple connectivity in your environment

With numerous features and characteristics, the IC-602 easily integrates into standard environments and workflows. In addition to PostScript 3, it offers fast, direct PDF printing with PDF 1.7 as well as PCL, which is generally required for printing in data centres and CRDs, and PPML 2.2, which targets variable data printing applications. The standard plug-in driver with enhanced ease of use ensures compatibility with the latest versions of Microsoft and Apple Macintosh environments.

## All from a single source – integration into the Konica Minolta application portfolio

A variety of Konica Minolta's own and third-party applications help users transmit job information and print files through the corporate structure faster and more efficiently:

- Printgroove POD Queue provides comprehensive print queue management, including control of processes, tasks, capacities and devices. This solution effectively manages and edits print queues by linking multiple output devices throughout the production floor.
- Printgroove JT Man is the comprehensive print management software that works with job tickets, enabling the creation of sophisticated print products without having to learn complex applications.
- Printgroove JT Compile makes the repeated, time-consuming imposition and print preparation of documentation such as manuals, handbooks, training materials and monthly reports a thing of the past.

# OPTIONAL

## Easy workflow integration with APPE kit

The Adobe PDF PrintEngine (APPE) kit extends the capability of the IC-602 with the Adobe PDF PrintEngine Version 2.6, for native PDF workflows from creation to printing and optimised variable data printing.

## Boost your performance

Upgrade your IC-602 with the performance enhancement kit for more memory and storage space.

## Technical specifications

Type	IC-602A internal Konica Minolta controller
Operating system	Linux
CPU	Intel Core i5 2400 (C1070) Pentium G850 (C1060/L)
Clock speed	3.1 GHz (C1070) 2.9 GHz (C1060/L)
RAM	10 GB, max. 14 GB
HDD	1,500 GB, max. 2,000 GB
Interface	Ethernet 10/100/1,000-Base-T
File formats	Adobe® PostScript® 3 PCL 5c/6 XPS PDF 1.7; PDF/X-1a, X-3 TIFF; JPEG PPML v2.2
Client environments	Windows® 8/7/XP/Vista™ Windows® Server 2012/2008/2003 Macintosh® OS 10.5/10.6/10.7/10.8

Type	IC-602B internal Konica Minolta controller
Operating system	Linux
CPU	Intel Core i5 2400
Clock speed	3.1 GHz
RAM	6 GB, max. 10 GB
HDD	1,500 GB, max. 2,000 GB
Interface	Ethernet 10/100/1,000-Base-T
File formats	Adobe® PostScript® 3 PCL 5c/6 XPS PDF 1.7; PDF/X-1a, X-3 TIFF; JPEG PPML v2.2
Client environments	Windows® 8/7/XP/Vista™ Windows® Server 2012/2008/2003 Macintosh® OS 10.5/10.6/10.7/10.8





KONICA MINOLTA

- All specifications refer to A4-size paper of 80 gsm quality.
- The support and availability of the listed specifications and functionalities varies depending on operating systems, applications and network protocols as well as network and system configurations.
- The stated life expectancy of each consumable is based on specific operating conditions such as page coverage for a particular page size (5% coverage of A4).
  - The actual life of each consumable will vary depending on use and other printing variables including page coverage, page size, media type, continuous or intermittent printing, ambient temperature and humidity.
- Some of the product illustrations contain optional accessories.
- Specifications and accessories are based on the information available at the time of printing and are subject to change without notice.
- Konica Minolta does not warrant that any prices or specifications mentioned will be error-free.
- All brand and product names may be registered trademarks or trademarks of their respective holders and are hereby acknowledged.

Your Konica Minolta Business Solutions Partner:

GRAPHAX.HU KFT  
Tel: 06-40-44-COPY  
ertekesites@graphax.hu  
www.graphax.hu

**Konica Minolta**  
**Business Solutions Europe GmbH**  
Europaallee 17  
30855 Langenhagen 🇩🇪 Germany  
Tel.: +49 (0) 511 74 04-0  
Fax: +49 (0) 511 74 10 50  
www.konicaminolta.eu